

## ***Skylight Submittal Requirements***

### **Residential Projects:**

Submit two (2) copies of a drawing providing the following information:

- The location and size of the new and existing skylight(s) on a roof layout drawing (looking down on the roof).
- A “section view” through the roof, shaft and ceiling area of the skylight.
- A ceiling and roof framing drawing showing existing and new framing members.  
**Roof trusses cannot be “cut” or “altered” without an engineered analysis.**
- The manufacturers name and product model number of the skylight.
- The ICC evaluation report number of the manufactured skylight (or listing by other agency approved by the Permit Center).

### **Note:**

Skylights that are openable must be a minimum 10’ from plumbing vents unless the vents extend a minimum 3’ above skylight opening. Skylights must be a minimum 4’ from mechanical flue vents. Show all vents on the roof plan.

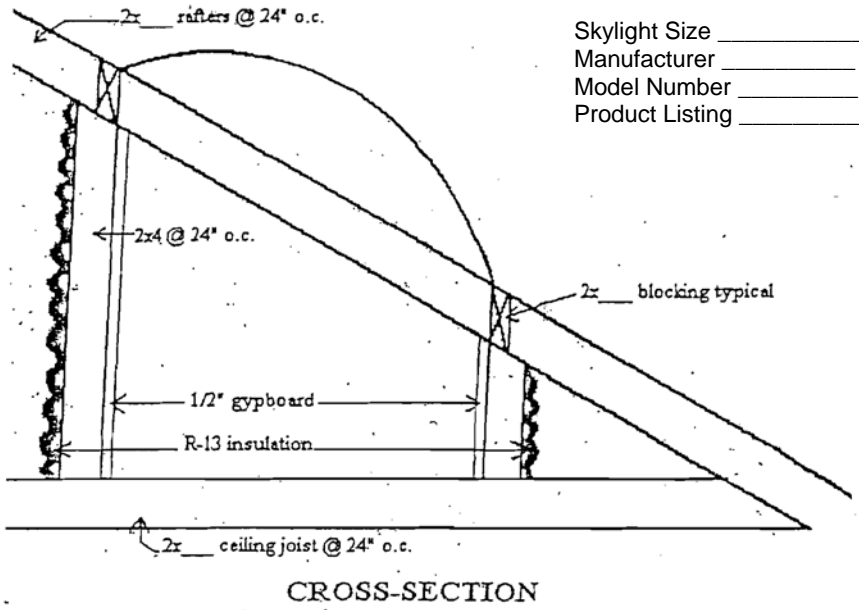
### **Energy Efficiency Requirements:**

Skylights are considered an “alteration” to the building envelope per the 2007 California Energy Code. New skylight installations must meet the energy requirements listed below, note the requirements on your plan.

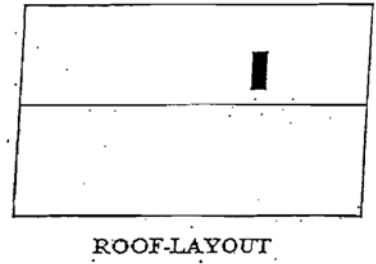
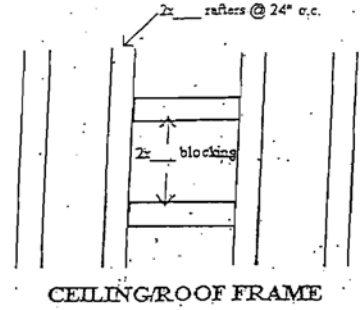
1. A minimum U-Factor of 0.57 or “double-glazed” at the roof surface.
2. A solar heat gain coefficient (SHGC) of 0.40 or less.
3. Insulate the walls of the skylight well with a minimum R-13 insulation.
4. Tube style skylights may be installed without meeting the requirements of items number one and two above, as long as the “tube” is insulated with a minimum R-13 insulation.

See Sample drawings on the next page

# Sample skylight installation drawings



Skylight Size \_\_\_\_\_  
Manufacturer \_\_\_\_\_  
Model Number \_\_\_\_\_  
Product Listing \_\_\_\_\_



Project Address: \_\_\_\_\_